

BEAUJOLAIS CRUS

Soils of Beaujolais Crus

Granites

- Soils on shallow granite
- Soils on shallow altered granite
- Soils on deep granite
- Soils on deep, heavily altered granite

Siliceous Volcanic Rock

- Soils on varied shallow siliceous rock
- Soils on deep and varied siliceous rock

Blue or Schistose Volcanic Rock

- Soils on shallow altered 'blue stone'
- Soils on deep altered 'blue stone'
- Soils on shallow altered schist
- Soils on deep altered schist

Sandstone Rock

- Calcareous soils on alternating sandstone with clay
- Non calcareous soils on sandstone

Limestone

- Soils on shallow hard limestone
- Decarbonated soils on shallow limestone rock
- Soils on deep hard limestone
- Decarbonated soils on deep limestone rock

Marl

- Calcareous soils on marl
- Decarbonated soils on marl

Scree

- Soils on deposits from calcareous gravelly slopes
- Soils on deposits from non-calcareous gravelly slopes

Residual Clay

- Soils on non-stony residual clay
- Soils on residual clay with chert and flint

Piedmont formations and old alluvium

- Piedmont soils with few stones and old alluvium
- Stony soils of old alluvium

Recent lower slope colluvial deposits

- Very deep soils of recent colluvium

Outline and cru name

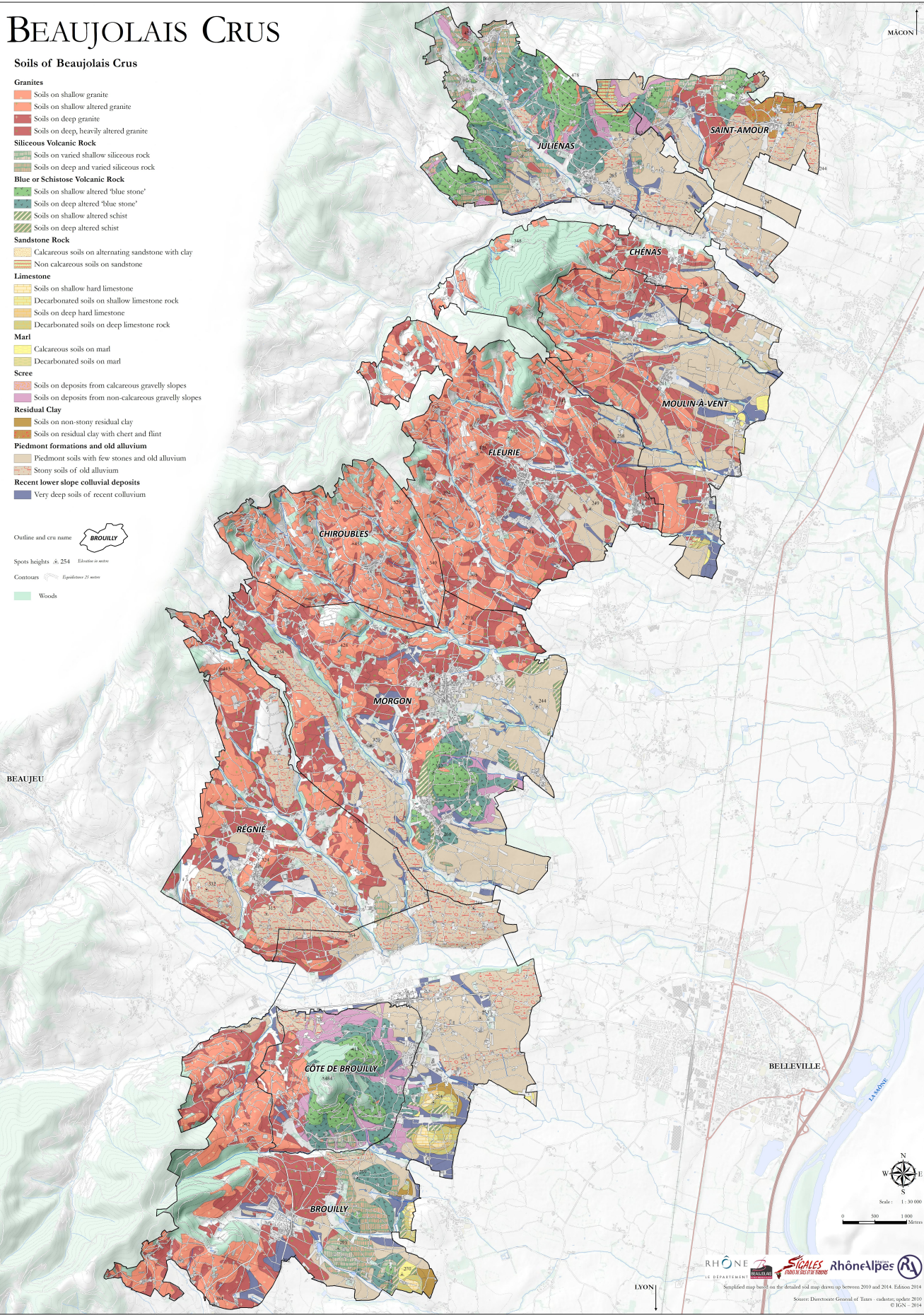


Spots heights ≥ 254 Elevation in meters

Contours \approx Egalisation 20 meters

Woods

BEAUJEU



MAGNON

LYON



Scale: 1:30000
0 500 1000 Meters